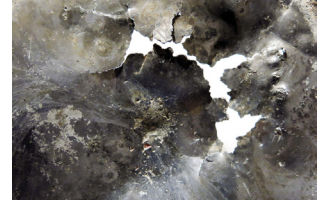


# METAL DISC

17 cm  
light  
surface: graysh blue, three blue episodes  
morphology interrupted by an empty zone  
edge twisted inward (it seems to be devouring itself)



**Pancake Snare drum**  
35,7 cm  
miscellaneous surface, variable tension, exposed to temperature variation  
two large zones, colored brown, white, yellow.

## LEFT HAND

Never ending coming down, fingers impact on the edge, by moving on.  
The supporting surface is a space where my hand energy and weight are redeployed. Every impact is absorbed, then returned on.  
On the metal disc left hand is arranged into countless sound events,  
minimal, localitized. The metal lays on and finds balance into an ongoing moving, a bunch of points - sounds - which express its character.  
Every coming down corresponds to a series of events, informing me about the relationship status of surfaces.

## RIGHT HAND

Camouflage - a beat impacting the surface. I try to hide the sound in the cluster of the drum.  
Right hand is the service character, its role is to compensate the movement to the left, maintaining the performance of the membrane.

## INTERRUPTION - thinking through making

Six-hundred movements of the left hand  
Six-hundred camouflaged movements of the right hand

1 2 3 4 5 6 7 8 9 10 11 12 13 14 15 16 17 18 19 20 21 22 23 24 25 26 27 28 29 30 31 32 33 34 35 36 37 38 39 40 41 42 43 44 45 46 47 48 49 50 51 52 53 54 55 56 57 58 59 60  
1 2 3 4 5 6 7 8 9 10 11 12 13 14 15 16 17 18 19 20 21 22 23 24 25 26 27 28 29 30 31 32 33 34 35 36 37 38 39 40 41 42 43 44 45 46 47 48 49 50 51 52 53 54 55 56 57 58 59 60  
1 2 3 4 5 6 7 8 9 10 11 12 13 14 15 16 17 18 19 20 21 22 23 24 25 26 27 28 29 30 31 32 33 34 35 36 37 38 39 40 41 42 43 44 45 46 47 48 49 50 51 52 53 54 55 56 57 58 59 60  
1 2 3 4 5 6 7 8 9 10 11 12 13 14 15 16 17 18 19 20 21 22 23 24 25 26 27 28 29 30 31 32 33 34 35 36 37 38 39 40 41 42 43 44 45 46 47 48 49 50 51 52 53 54 55 56 57 58 59 60  
1 2 3 4 5 6 7 8 9 10 11 12 13 14 15 16 17 18 19 20 21 22 23 24 25 26 27 28 29 30 31 32 33 34 35 36 37 38 39 40 41 42 43 44 45 46 47 48 49 50 51 52 53 54 55 56 57 58 59 60  
1 2 3 4 5 6 7 8 9 10 11 12 13 14 15 16 17 18 19 20 21 22 23 24 25 26 27 28 29 30 31 32 33 34 35 36 37 38 39 40 41 42 43 44 45 46 47 48 49 50 51 52 53 54 55 56 57 58 59 60  
1 2 3 4 5 6 7 8 9 10 11 12 13 14 15 16 17 18 19 20 21 22 23 24 25 26 27 28 29 30 31 32 33 34 35 36 37 38 39 40 41 42 43 44 45 46 47 48 49 50 51 52 53 54 55 56 57 58 59 60  
1 2 3 4 5 6 7 8 9 10 11 12 13 14 15 16 17 18 19 20 21 22 23 24 25 26 27 28 29 30 31 32 33 34 35 36 37 38 39 40 41 42 43 44 45 46 47 48 49 50 51 52 53 54 55 56 57 58 59 60  
1 2 3 4 5 6 7 8 9 10 11 12 13 14 15 16 17 18 19 20 21 22 23 24 25 26 27 28 29 30 31 32 33 34 35 36 37 38 39 40 41 42 43 44 45 46 47 48 49 50 51 52 53 54 55 56 57 58 59 60

10

# WHAT REMAINS?

**Polyrhythm**  
Sound so produced is entered by rain, which is untiring in Milan... I can almost feel the water on the membrane surface, watering down sound's edges.

# RAIN

*"Everywhere, expecially where is unusual, the "rain" is perceived as whole since before its falling down.  
Every language says rain "falls down".  
People look at the rain as parallel lines; number of drops falling down highlights the unity of their direction. Direction more impressive for people is that one of the falling down: others directions seem to be originated by it. The falling down is the more feared event during childhood: the first thing against we have to be prepared. We learn up to not falling down; starting from a certain age, every fall is ridiculous or dangerous. Compared to human beings, "rain" instead is what "must" falls down.  
Drops are all perceived falling at in the same way. Parallelism to the rain lines, same sound, same wet feeling caused on the skin by every single rain drop, everything goes to highlights the equality of the drops. Rain can become more heavy or more gentle, its intensity changes. Number of drops changes. We never rely to its continous increase; contrarilywise, we know that rain will stop: when it will stop drops will enter the ground, without leaving a trace." (E.Canetti)*

## INTERRUPTION - stay



T A P E N O I S E